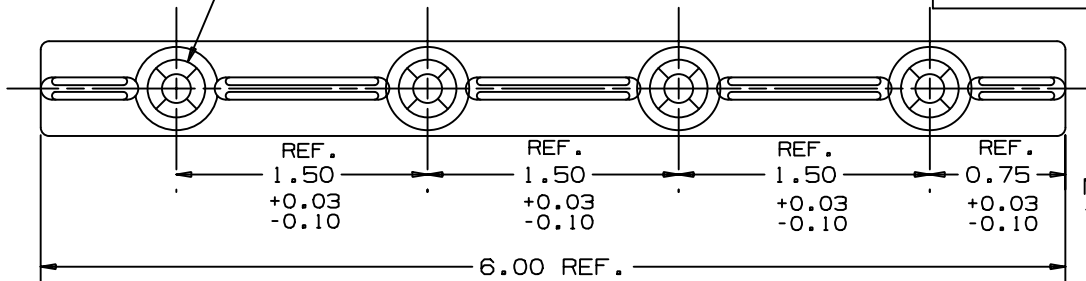


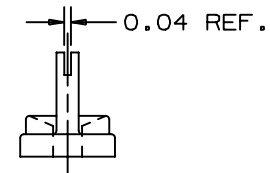
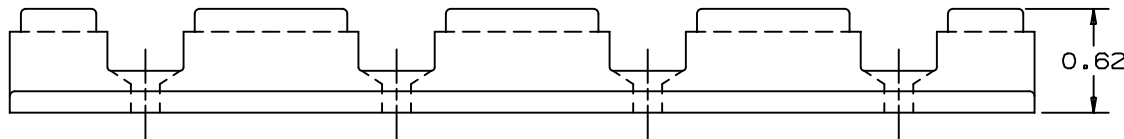
THIS COPY IS PROVIDED ON A RESTRICTED BASIS AND IS NOT TO BE USED IN ANY WAY DETRIMENTAL TO THE INTERESTS OF PANDUIT CORP.

PANDUIT PART NUMBER*	WEIGHT lbs/100 pcs (g)/100 pcs	USE WITH PANDUIT PART NUMBER
FSH40	2.80 (1,270)	FS156

FOR #8 FLAT HEAD SCREW



NOTES:  
\*1. SEE CURRENT PRICE SHEET FOR PART NUMBER SUFFIX DESIGNATION FOR PACKAGE SIZE.



DIMENSIONS IN BRACKETS ARE METRIC [ mm ]

CAD FILENAME/LAYERS  
G00239CL\_PI\_FSH40\_01

**PANDUIT**

CORP. TINLEY PARK, ILLINOIS

FSH40  
FANNING STRIP HOLDER

UNLESS OTHERWISE SPECIFIED,  
DIMENSIONAL TOLERANCES ARE:  
(.X) ±0.05 [1.3] (.XXX) ±0.010 [0.25]  
(.XX) ±0.02 [0.5] ANGLES ±5°

UNLESS OTHERWISE SPECIFIED,  
ALL DIMENSIONS ARE GIVEN  
IN INCHES, THIRD ANGLE PROJECTION.

REV	DATE	BY	CHK	DESCRIPTION	ECN	R	CUST	SUP
I	2/26/01	LGG		ADDED REF. TO DIM.	GB0239CL	I		
R	2/22/95	DWP		INITIAL RELEASE	GB0239CL	R		

DRAWN BY DWP  
DATE 2/22/95  
CHK'D

MAT'L:

ABS

SCALE 1:1

DRAWING NO.  
GB0239CL

DWG  
A  
SIZE